

DermTech

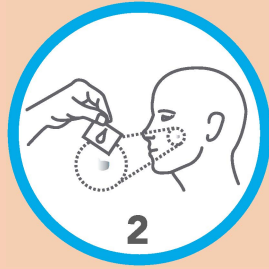
INSTRUCTIONS FOR USE

How to sample the surface of your concerning mole. Please review all the steps before you start.



1

Trim excessive hair with scissors. Ensure no blood. Do not use on palms, soles, mucous membranes.



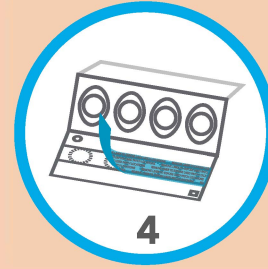
2

Wash your hands with soap and water. Clean the mole with alcohol pad. Do not rub so much that the mole bleeds.



3

Fill in the required information on the Adhesive Skin Collector



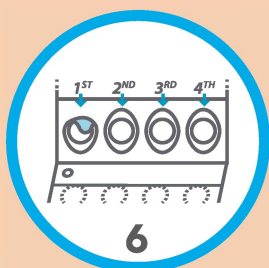
4

Open Adhesive Skin Collector. Remove and discard the panel liner.



5

Use gauze pad to completely dry and rough up mole.



6

Remove 1st patch.



7

Center patch directly on the mole.



8

Press firmly and make 5 circular motions over the entire surface of the whole mole.



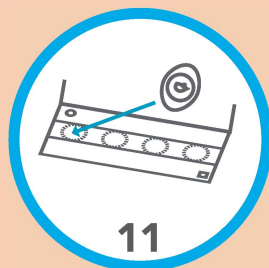
9

Use the provided permanent marker to outline just outside the edge of the mole.



10

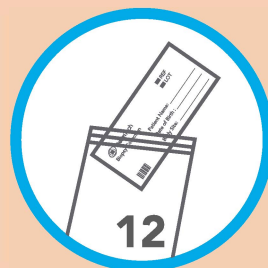
Pull patch off the mole in one direction.



11

Place 1st patch on the lower panel.

Repeat steps 5-11. Make sure to outline the mole on every patch or the sample cannot be tested.



12

Insert sample collector into resealable bag.



13

Return sample in provided envelope within 5 days. Do not refrigerate sample. For help scheduling a pickup, call customer service at (866) 450-4223 ext 156.