

# Adhesive Skin Collection Kit

## Instructions for Use

DermTech

### INSTRUCTIONS

**STEP 1:** Enter all required patient information on the Sample Collector. **Samples with missing information cannot be processed.**

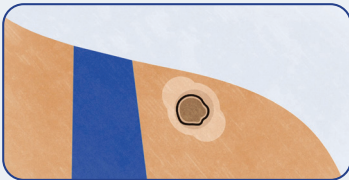
**STEP 2:** If necessary, trim hair with small surgical scissors.

**STEP 3:** Swab the lesion thoroughly with the alcohol pad.

**STEP 4:** Dry thoroughly with the gauze pad. **Any moisture may prevent adequate sample collection.**



**STEP 5:** Pull the skin taught. Apply a sticker. Press and rub firmly on the sticker for 10 seconds.



**STEP 6:** Outline the lesion with a ~1 mm border, **completely closing the circle. Incompletely circled samples cannot be processed.**

**STEP 7:** Remove the sticker carefully and place it **adhesive side down** on the pre-marked location in the Sample Collector.



**STEP 8:** Repeat steps 5-7 with the three remaining stickers. All four stickers must be applied to the lesion to ensure adequate sample collection.

**STEP 9:** Refold the Sample Collector so that the clear cover is on the outside. Confirm that patient information is recorded accurately and completely. **Samples with missing information cannot be processed.**

**STEP 10:** Place the Sample Collector into the re-sealable foil bag with desiccant packet (moisture control). Place this bag and the completed test requisition form in a FedEx envelope and send overnight. Ship the sample as soon as possible, ideally on the day of collection, and no more than 5 days post-collection. Store at room temperature until shipment (do not freeze or refrigerate).

To schedule a FedEx pickup, text DermTech Client Services at (858) 788-1310, call (858) 450-4222, or send us a message at [operations@dermtech.com](mailto:operations@dermtech.com).

### LESIONS ACCEPTABLE FOR TESTING

The test is intended for patients 18 years and older with Fitzpatrick Skin Types I, II, and III. The lesion to be tested must meet one or more ABCDE\* criteria and be at least 3.5 mm in minimum dimension. The test is not for use on lesions that are ulcerated, bleeding, or scarred, those involved by psoriasis, eczema, or other inflammatory conditions, or those located on the palms, soles, nails, or mucosal surfaces. The test is intended for lesions considered to have a low to moderate probability of being a melanoma. Lesions already known to be melanoma or considered highly likely to be melanoma are not appropriate for testing.

\*Asymmetry, irregular Border, Color variegation, Diameter > 6mm, Evolution / change

### KIT CONTENTS

- Instructions for Use (IFU)
- Sample Collector containing four (4) adhesive DermTech Smart Stickers™ in a re-sealable plastic bag
- 70% isopropyl alcohol prep pad
- Gauze pad
- Test Requisition Form
- Re-sealable foil bag with desiccant packet
- Black permanent marker

NOTE: Each Sample Collector and Test Requisition Form is labeled with a unique barcode. A patient's skin sample must be collected **using all (4) Smart Stickers** contained in the Sample Collector.