

# DermTech Melanoma Test:

## Instructions for Noninvasive Sample Collection

### DermTech Smart Sticker™ Adhesive Skin Collection

⚠ Please fill in the following information that is CLIA required to process the sample:

Patient Name: \_\_\_\_\_

Date of Birth: \_\_\_\_\_  
MM/DD/YYYY

Body Site: \_\_\_\_\_

# DermTech

ADHESIVE LOT

COLLECTOR LOT

EXP

DMT01-1000-8.3.0



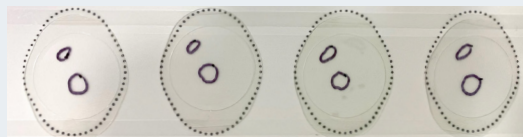
Scan to watch  
instructional video

Sample Collector Trifold

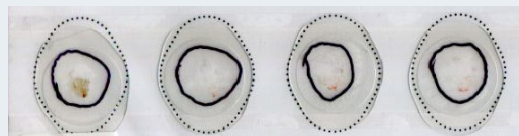


- Reminder: No **thick hair or blood** on samples
- **Ensure all required information is filled out and accurate on the Sample Collector Trifold** (this information is required for the sample to be processed)
- Please ensure all four (4) Smart Stickers™ in the Sample Collector Trifold are used per lesion tested

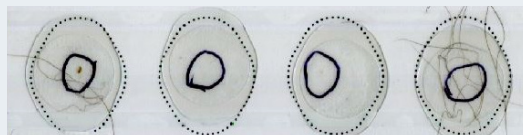
## INCORRECT SAMPLE COLLECTION



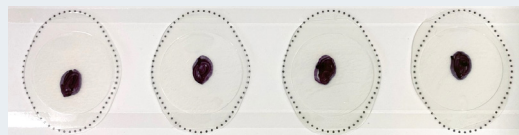
Multiple lesions within same sticker



Blood on specimen



Hair on specimen



Lesion margins completely filled in

## CORRECT SAMPLE COLLECTION



Lesion margins **fully enclosed by outline**



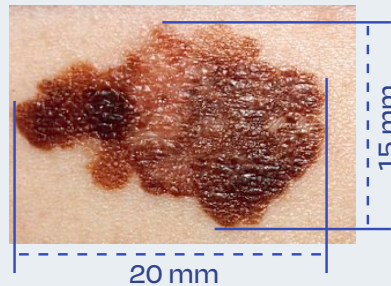
# DermTech

# Collecting Large Lesion (>19mm) Samples With More Than One Sample Collector Trifold



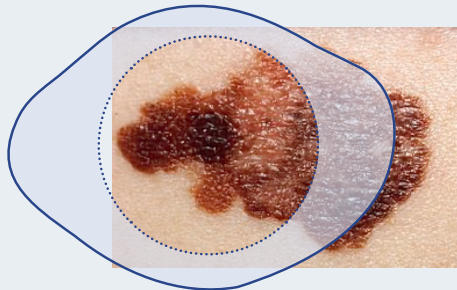
- Reminder: No **thick hair or blood** on samples
- Ensure each Sample Collector Trifold clearly indicates what portion of the lesion was tested in the "Body Site" section (i.e., mark them "1 of 2" and "2 of 2")
- Ensure all four (4) Smart Stickers included in each Sample Collector Trifold are used on each portion of the lesion, and that they are each correctly marked (see below)
- If a lesion requires two or more test kits (i.e. is >19 mm), each kit will receive its own separate test report

A large diameter lesion is a lesion that exceeds the maximum testable diameter of 19 mm on the Smart Stickers™



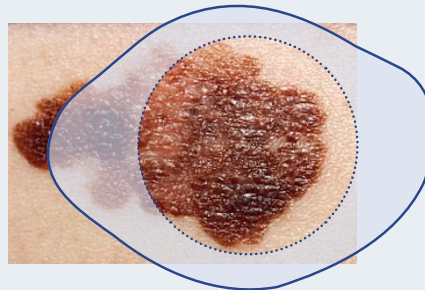
## Test Kit 1:

Use all four (4) Smart Stickers in the first test kit for the left half of lesion



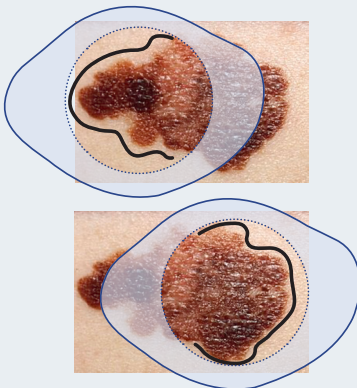
## Test Kit 2:

Use all four (4) Smart Stickers in the second test kit for the right half of lesion



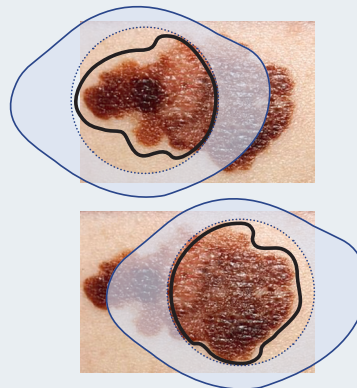
## INCORRECT SAMPLE COLLECTION

Outline does not fully enclose the portion of the lesion being tested



## CORRECT SAMPLE COLLECTION

Each portion of the lesion is completely enclosed by the outline



DermTech